

Performance Measurement Device



Instruction Manual



Ripxx Performance Measurement Device



2

www.ripxx.com

Table of Contents

Section 1: Getting Started - pg 4

Section 2: Interface Guide - pg 6

Section 3: Getting Connected - pg 8

Section 4: Using SD Memory - pg 10

Section 5: Caring for Your Ripxx - pg 11

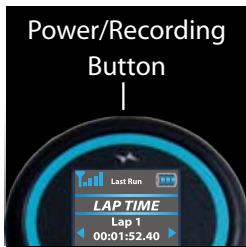
Section 6: Bonus Information - pg 11

Warranty - Back

Did You Know?

Search “Ripxx” from your Smartphone and checkout all of the great Ripxx Apps today!

Section 1



Getting Started

You know why you do it. It's something in the adrenaline. It's the pleasure, and even the pain. It's what drives you. It's what makes you push your body to the limit. It's a feeling that no device can track, but you already know it inside and out. You get it. Now you'll know how you do it. Forget about your limits and start setting the bar higher. Discover your hidden strengths and improve your weaknesses by capturing every critical moment in its finest detail.

Measure it. Get better.

Turning Your Ripxx on/off

To turn on your Ripxx, press and hold the Power/Recording button on the top of the unit for a few moments until the OLED display comes on. Press and hold the same button again to turn your Ripxx off. You can also scroll to the "Turn Off" screen on the GUI and press the select button to turn it off. You must stop recording before turning Ripxx off.

Did You Know?

View our complete library of demo videos and our full list of FAQ's at Ripxx.com



Mounting Your Device

Mount your Ripxx to whatever you want to measure. For example, if you're skiing or snowboarding, put Ripxx in the optional holster and strap it to your leg or arm. For MX, you might want to zip-tie it, or use Velcro to attach it to the back of your chest protector or on the forks of your bike. For best performance, try to mount Ripxx so that the device is oriented along the direction of travel and with a clear view of the sky. Because the GPS antenna is next to the screen, it is best to mount Ripxx so that the Power/Recording button is pointing toward the sky. This isn't necessary, but produces the best GPS data.

Note: If you don't care about tracking the orientation of your body, you can still use Ripxx to track your position and speed by putting it in your pocket, or just about anywhere.



Recording Your Data

When you're ready to start recording, push the Power/Recording button (without holding it down), or select "Start Run" on the GUI and press the select button. The display will inform you that a recording session has started. The GUI will go black after a few seconds to save power. To end the session, press either button again until the display informs you that the recording has ended. Do not continue holding the Power/Recording button on top of your Ripxx, as the device will shut down after ten seconds.

Once you have your Ripxx switched on, recording, and holstered, you're set. From here on out, it's all about you and what you do. The difference is that this time, every moment on your journey will still be there tomorrow.

Section 2



Interface Guide

Your Ripxx can provide you with some information about your most recent run as soon as recording is stopped. The screen shows you data from your last run and is also used for overall control and set up. We will continue to add to the information that is available on the device, so check back with us frequently at www.Ripxx.com for firmware updates.

Interact with the device using the Navigation Buttons. The arrows navigate up/down/left/right and the center button selects or goes back to an earlier screen. At the top of the interface on each screen is a graphic showing you the GPS signal strength/ quality, current time and the remaining battery life. Best results are obtained when the GPS indicator shows 3 or 4 bars. The battery should last for an entire day of activity (8 hours or more) without any problems. The icon will turn red when power is nearly exhausted.

Start Run: Selecting this option will begin recording. The screen will go black after a few seconds to save power.

Users: Ripxx lets you store up to five individual users. You can enter users using the Ripxx Manager software, or by scrolling down to "New User". If you select "New User", scroll up/down to change the letter. Scroll left/right add or edit letters. Pressing select again will add name as displayed to the user menu.

Courses: This menu item allows you to create a start and finish line. Select “Start Course” to begin creating a course using the Wizard. When creating a line, you should walk along the start/finish line.

Settings: Select the “Settings” menu item to calibrate the gyros on your Ripxx, or to change clock timezone, and screen brightness. Gyro offsets and the Ripxx clock time are recorded in the data files.

Info: Select the “Info” menu item to view the GPS clock and how much storage remains on the micro- SD card. The time is adjusted to your local time zone as set under “Settings” This menu item also displays your current GPS coordinates, altitude, the model number and firmware version.

Last Run: Selecting this option from the home screen will take you to additional screens with some of the statistics from your most recent recording. Once in the “Last Run” section, navigate left and right to see various statistics such as lap times, run time, distance traveled, and vertical drop.

Top Stats: This option is similar to the “Last Run” menu item but provides top stats since the last time the device was powered on. Again, once you’re in the “Top Stats” section, navigate left and right to see various statistics such as your fastest speed and total run time.

Help: This provides some top-level help with navigation of your Ripxx.

Turn Off: Pressing this button will turn your Ripxx off.



Section 3

Getting Connected

Your Ripxx is designed to connect effortlessly with your home PC or laptop. This is how the battery is charged, the firmware is updated, and your data is uploaded for viewing and sharing. Your Ripxx device comes with a Micro-USB connection cable. Connect the large connector on the cable into your PC and the smaller end into the Ripxx. When you first plug it in, the LED light above the screen will light bright red. This indicates that Ripxx is charging the battery and produces the fastest recharge. Pressing the Power/Recording button when the device is connected to a computer will automatically launch the Ripxx Manager. *The USB port is protected with a rubber cap that is tethered to the Ripxx. USE CARE WHEN REMOVING THE CAP FROM THE PORT AS THE TETHER IS EASILY BROKEN. Breaking the cap tether is not covered under the Ripxx limited warranty.*

Ripxx Manager

The Ripxx Manager interface application will automatically launch when you plug your Ripxx into your PC and turn it on. Ripxx manager scans the SD card and looks for files that have not yet been uploaded to your computer. New files will then be transferred from the SD card to your PC and placed in a folder with the name you give it.

Basic stats about each file are displayed in Ripxx manager. You can also launch Ripxx Pro and Ripxx Replay from Ripxx Manager or add/edit users or update your firmware.



Ripxx Replay

Ripxx Replay offers full 3D playback of your data with life-like terrains and four different views (first person, third person, chase, and helicopter). Ripxx Replay also has a plotting functionality so you can see the raw, measured data for detailed analysis and exporting. For more information on using Ripxx Replay, please consult the software's help documentation. New ski resorts, BMX, and MX tracks are being added frequently to the database so check back for updates often. There is also a "generic" scene that places your data in a three dimensional box for replay.

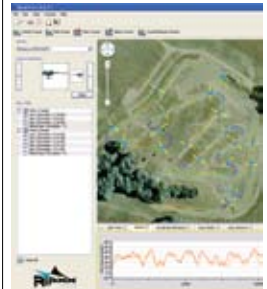
Note: GPS altitude is not very accurate, so your generic scene may show some altitude drift.



9

Ripxx Pro

Ripxx Pro is an analysis software package that can be used for detailed analysis of the data recorded by Ripxx. In addition to seeing your tracks on Google Maps (internet connection required), you can view graphs of speed, acceleration, rotation, pedal count, stroke count and a host of others to help you get better. Ripxx Pro also has tools for making complex courses with splits. It also generates a number of useful reports to help track your progress. Download the latest copy of Ripxx Pro from www.Ripxx.com.



Time	Speed	Acceleration	Rotation	Pedal Count	Stroke Count	Altitude	Distance	Time	Speed	Acceleration	Rotation	Pedal Count	Stroke Count	Altitude	Distance	Time	Speed	Acceleration	Rotation	Pedal Count	Stroke Count	Altitude	Distance	Time
0:00	0.0	0.0	0.0	0.0	0.0	0.0	0.0	0:00	0.0	0.0	0.0	0.0	0.0	0.0	0.0	0:00	0.0	0.0	0.0	0.0	0.0	0.0	0.0	0:00
0:01	1.2	0.5	1.5	1.0	1.0	1.0	1.0	0:01	1.2	0.5	1.5	1.0	1.0	1.0	1.0	0:01	1.2	0.5	1.5	1.0	1.0	1.0	1.0	0:01
0:02	2.4	1.0	3.0	2.0	2.0	2.0	2.0	0:02	2.4	1.0	3.0	2.0	2.0	2.0	2.0	0:02	2.4	1.0	3.0	2.0	2.0	2.0	2.0	0:02
0:03	3.6	1.5	4.5	3.0	3.0	3.0	3.0	0:03	3.6	1.5	4.5	3.0	3.0	3.0	3.0	0:03	3.6	1.5	4.5	3.0	3.0	3.0	3.0	0:03
0:04	4.8	2.0	6.0	4.0	4.0	4.0	4.0	0:04	4.8	2.0	6.0	4.0	4.0	4.0	4.0	0:04	4.8	2.0	6.0	4.0	4.0	4.0	4.0	0:04
0:05	6.0	2.5	7.5	5.0	5.0	5.0	5.0	0:05	6.0	2.5	7.5	5.0	5.0	5.0	5.0	0:05	6.0	2.5	7.5	5.0	5.0	5.0	5.0	0:05
0:06	7.2	3.0	9.0	6.0	6.0	6.0	6.0	0:06	7.2	3.0	9.0	6.0	6.0	6.0	6.0	0:06	7.2	3.0	9.0	6.0	6.0	6.0	6.0	0:06
0:07	8.4	3.5	10.5	7.0	7.0	7.0	7.0	0:07	8.4	3.5	10.5	7.0	7.0	7.0	7.0	0:07	8.4	3.5	10.5	7.0	7.0	7.0	7.0	0:07
0:08	9.6	4.0	12.0	8.0	8.0	8.0	8.0	0:08	9.6	4.0	12.0	8.0	8.0	8.0	8.0	0:08	9.6	4.0	12.0	8.0	8.0	8.0	8.0	0:08
0:09	10.8	4.5	13.5	9.0	9.0	9.0	9.0	0:09	10.8	4.5	13.5	9.0	9.0	9.0	9.0	0:09	10.8	4.5	13.5	9.0	9.0	9.0	9.0	0:09
0:10	12.0	5.0	15.0	10.0	10.0	10.0	10.0	0:10	12.0	5.0	15.0	10.0	10.0	10.0	10.0	0:10	12.0	5.0	15.0	10.0	10.0	10.0	10.0	0:10
0:11	13.2	5.5	16.5	11.0	11.0	11.0	11.0	0:11	13.2	5.5	16.5	11.0	11.0	11.0	11.0	0:11	13.2	5.5	16.5	11.0	11.0	11.0	11.0	0:11
0:12	14.4	6.0	18.0	12.0	12.0	12.0	12.0	0:12	14.4	6.0	18.0	12.0	12.0	12.0	12.0	0:12	14.4	6.0	18.0	12.0	12.0	12.0	12.0	0:12
0:13	15.6	6.5	19.5	13.0	13.0	13.0	13.0	0:13	15.6	6.5	19.5	13.0	13.0	13.0	13.0	0:13	15.6	6.5	19.5	13.0	13.0	13.0	13.0	0:13
0:14	16.8	7.0	21.0	14.0	14.0	14.0	14.0	0:14	16.8	7.0	21.0	14.0	14.0	14.0	14.0	0:14	16.8	7.0	21.0	14.0	14.0	14.0	14.0	0:14
0:15	18.0	7.5	22.5	15.0	15.0	15.0	15.0	0:15	18.0	7.5	22.5	15.0	15.0	15.0	15.0	0:15	18.0	7.5	22.5	15.0	15.0	15.0	15.0	0:15
0:16	19.2	8.0	24.0	16.0	16.0	16.0	16.0	0:16	19.2	8.0	24.0	16.0	16.0	16.0	16.0	0:16	19.2	8.0	24.0	16.0	16.0	16.0	16.0	0:16
0:17	20.4	8.5	25.5	17.0	17.0	17.0	17.0	0:17	20.4	8.5	25.5	17.0	17.0	17.0	17.0	0:17	20.4	8.5	25.5	17.0	17.0	17.0	17.0	0:17
0:18	21.6	9.0	27.0	18.0	18.0	18.0	18.0	0:18	21.6	9.0	27.0	18.0	18.0	18.0	18.0	0:18	21.6	9.0	27.0	18.0	18.0	18.0	18.0	0:18
0:19	22.8	9.5	28.5	19.0	19.0	19.0	19.0	0:19	22.8	9.5	28.5	19.0	19.0	19.0	19.0	0:19	22.8	9.5	28.5	19.0	19.0	19.0	19.0	0:19
0:20	24.0	10.0	30.0	20.0	20.0	20.0	20.0	0:20	24.0	10.0	30.0	20.0	20.0	20.0	20.0	0:20	24.0	10.0	30.0	20.0	20.0	20.0	20.0	0:20
0:21	25.2	10.5	31.5	21.0	21.0	21.0	21.0	0:21	25.2	10.5	31.5	21.0	21.0	21.0	21.0	0:21	25.2	10.5	31.5	21.0	21.0	21.0	21.0	0:21
0:22	26.4	11.0	33.0	22.0	22.0	22.0	22.0	0:22	26.4	11.0	33.0	22.0	22.0	22.0	22.0	0:22	26.4	11.0	33.0	22.0	22.0	22.0	22.0	0:22
0:23	27.6	11.5	34.5	23.0	23.0	23.0	23.0	0:23	27.6	11.5	34.5	23.0	23.0	23.0	23.0	0:23	27.6	11.5	34.5	23.0	23.0	23.0	23.0	0:23
0:24	28.8	12.0	36.0	24.0	24.0	24.0	24.0	0:24	28.8	12.0	36.0	24.0	24.0	24.0	24.0	0:24	28.8	12.0	36.0	24.0	24.0	24.0	24.0	0:24
0:25	30.0	12.5	37.5	25.0	25.0	25.0	25.0	0:25	30.0	12.5	37.5	25.0	25.0	25.0	25.0	0:25	30.0	12.5	37.5	25.0	25.0	25.0	25.0	0:25
0:26	31.2	13.0	39.0	26.0	26.0	26.0	26.0	0:26	31.2	13.0	39.0	26.0	26.0	26.0	26.0	0:26	31.2	13.0	39.0	26.0	26.0	26.0	26.0	0:26
0:27	32.4	13.5	40.5	27.0	27.0	27.0	27.0	0:27	32.4	13.5	40.5	27.0	27.0	27.0	27.0	0:27	32.4	13.5	40.5	27.0	27.0	27.0	27.0	0:27
0:28	33.6	14.0	42.0	28.0	28.0	28.0	28.0	0:28	33.6	14.0	42.0	28.0	28.0	28.0	28.0	0:28	33.6	14.0	42.0	28.0	28.0	28.0	28.0	0:28
0:29	34.8	14.5	43.5	29.0	29.0	29.0	29.0	0:29	34.8	14.5	43.5	29.0	29.0	29.0	29.0	0:29	34.8	14.5	43.5	29.0	29.0	29.0	29.0	0:29
0:30	36.0	15.0	45.0	30.0	30.0	30.0	30.0	0:30	36.0	15.0	45.0	30.0	30.0	30.0	30.0	0:30	36.0	15.0	45.0	30.0	30.0	30.0	30.0	0:30
0:31	37.2	15.5	46.5	31.0	31.0	31.0	31.0	0:31	37.2	15.5	46.5	31.0	31.0	31.0	31.0	0:31	37.2	15.5	46.5	31.0	31.0	31.0	31.0	0:31
0:32	38.4	16.0	48.0	32.0	32.0	32.0	32.0	0:32	38.4	16.0	48.0	32.0	32.0	32.0	32.0	0:32	38.4	16.0	48.0	32.0	32.0	32.0	32.0	0:32
0:33	39.6	16.5	49.5	33.0	33.0	33.0	33.0	0:33	39.6	16.5	49.5	33.0	33.0	33.0	33.0	0:33	39.6	16.5	49.5	33.0	33.0	33.0	33.0	0:33
0:34	40.8	17.0	51.0	34.0	34.0	34.0	34.0	0:34	40.8	17.0	51.0	34.0	34.0	34.0	34.0	0:34	40.8	17.0	51.0	34.0	34.0	34.0	34.0	0:34
0:35	42.0	17.5	52.5	35.0	35.0	35.0	35.0	0:35	42.0	17.5	52.5	35.0	35.0	35.0	35.0	0:35	42.0	17.5	52.5	35.0	35.0	35.0	35.0	0:35
0:36	43.2	18.0	54.0	36.0	36.0	36.0	36.0	0:36	43.2	18.0	54.0	36.0	36.0	36.0	36.0	0:36	43.2	18.0	54.0	36.0	36.0	36.0	36.0	0:36
0:37	44.4	18.5	55.5	37.0	37.0	37.0	37.0	0:37	44.4	18.5	55.5	37.0	37.0	37.0	37.0	0:37	44.4	18.5	55.5	37.0	37.0	37.0	37.0	0:37
0:38	45.6	19.0	57.0	38.0	38.0	38.0	38.0	0:38	45.6	19.0	57.0	38.0	38.0	38.0	38.0	0:38	45.6	19.0	57.0	38.0	38.0	38.0	38.0	0:38
0:39	46.8	19.5	58.5	39.0	39.0	39.0	39.0	0:39	46.8	19.5	58.5	39.0	39.0	39.0	39.0	0:39	46.8	19.5	58.5	39.0	39.0	39.0	39.0	0:39
0:40	48.0	20.0	60.0	40.0	40.0	40.0	40.0	0:40	48.0	20.0	60.0	40.0	40.0	40.0	40.0	0:40	48.0	20.0	60.0	40.0	40.0	40.0	40.0	0:40
0:41	49.2	20.5	61.5	41.0	41.0	41.0	41.0	0:41	49.2	20.5	61.5	41.0	41.0	41.0	41.0	0:41	49.2	20.5	61.5	41.0	41.0	41.0	41.0	0:41
0:42	50.4	21.0	63.0	42.0	42.0	42.0	42.0	0:42	50.4	21.0	63.0	42.0	42.0	42.0	42.0	0:42	50.4	21.0	63.0	42.0	42.0	42.0	42.0	0:42
0:43	51.6	21.5	64.5	43.0	43.0	43.0	43.0	0:43	51.6	21.5	64.5	43.0	43.0	43.0	43.0	0:43	51.6	21.5	64.5	43.0	43.0	43.0	43.0	0:43
0:44	52.8	22.0	66.0	44.0	44.0	44.0	44.0	0:44	52.8	22.0	66.0	44.0	44.0	44.0	44.0	0:44	52.8	22.0	66.0	44.0	44.0	44.0	44.0	0:44
0:45	54.0	22.5	67.5	45.0	45.0	45.0	45.0	0:45	54.0	22.5	67.5	45.0	45.0	45.0	45.0	0:45	54.0	22.5	67.5	45.0	45.0	45.0	45.0	0:45
0:46	55.2	23.0	69.0	46.0	46.0	46.0	46.0	0:46	55.2	23.0	69.0	46.0	46.0	46.0	46.0	0:46	55.2	23.0	69.0	46.0	46.0	46.0	46.0	0:46
0:47	56.4	23.5	70.5	47.0	47.0	47.0	47.0	0:47	56.4	23.5	70.5	47.0	47.0	47.0	47.0	0:47	56.4	23.5	70.5	47.0	47.0	47.0	47.0	0:47
0:48	57.6	24.0	72.0	48.0	48.0	48.0	48.0	0:48	57.6	24.0	72.0	48.0	48.0	48.0	48.0	0:48	57.6	24.0	72.0	48.0	48.0	48.0	48.0	0:48
0:49	58.8	24.5	73.5	49.0	49.0	49.0	49.0	0:49	58.8	24.5	73.5	49.0	49.0	49.0	49.0	0:49	58.8	24.5	73.5	49.0	49.0	49.0	49.0	0:49
0:50	60.0	25.0	75.0	50.0	50.0	50.0	50.0	0:50	60.0	25.0	75.0	50.0	50											

Section 4-6



Using SD Memory

SD Memory, also known as Flash Memory, is a secure, fast, and efficient way to store interchangeable data. Every second of your recorded data goes directly to a micro SD card, which can be accessed at any time via the micro SD Port as shown below. The micro SD port is protected with a rubber cap that is tethered to the Ripxx. **USE CARE WHEN REMOVING THE CAP FROM THE PORT AS THE TETHER IS EASILY BROKEN.** Breaking the cap tether is not covered under the Ripxx limited warranty.

Your Ripxx comes with a 2 GB SD card preinstalled that you can record to. The card and port are generic, meaning that you can purchase your own SD cards and swap them out. But don't break open your wallet just yet! Your pre-installed SD card can already hold roughly 160 hours of recording time, which can be moved off at any time when you upload to a PC.

Contact Us
We'd Love To Hear From You!
www.ripxx.com
info@ripxx.com
(931)451-7767

Caring for your Ripxx

Your Ripxx is made to be durable. The case is reasonably water resistant, but NOT waterproof. If you want to use your Ripxx in a wet environment (we mean water, not snow) you should seal it in a re-sealable plastic bag.

Here are some tips for caring for your Ripxx:

1. Do not submerge your Ripxx without using a waterproof enclosure
2. Do not leave the USB or SD ports uncovered when you're out on the field, as this might allow water to enter the device. If this happens, turn your Ripxx off and allow it to dry in a clean, warm place.
3. Do not throw the device as this may result in damage if dropped. Note: abuse is not covered by the limited warranty.
4. Do not hit the device (for example with a tennis racquet, or baseball bat) as this will certainly damage the device. Note: abuse is not covered by the limited warranty.
5. Use the holster as prescribed or otherwise secure the device so it doesn't fall off. Ripxx, LLC isn't responsible for damage to the device should it be inadequately secured to what is being measured.

Bonus information!

If you're a Ripxx customer, we know you live life to the max. We get that you fill your time with activities you love. You surround yourself with people you love. Maybe you're the type who loves the serenity of being alone with the mountain, or the trail. It's there that you're at peace. All of us pursue something that gives us peace and fulfillment. Well, we want to suggest to you that there is something more fulfilling in life; something that even lasts beyond this life. Something that we've found that we want you to have. It's a special kind of love. It's love found only in a relationship to Jesus Christ. Check out why this might be something you've been longing for by visiting www.getreallove.org. It may be the most important web site you've ever visited.

LIMITED WARRANTY

The RIPXX Personal Measurement Device is warranted against defects in materials and workmanship for one year from the date of shipment. In the event of such defects, we, Ripxx, LLC, will, at our sole option and as your exclusive remedy, repair or replace the defective product without charge. In order for this warranty to be effective, you must notify us within 30 days of discovery of the defect. You must return the defective product to us within the warranty period, properly packaged with insurance and transportation costs prepaid. Once we have determined the returned product to have a defect covered by this Limited Warranty, we will reship the product to you at our expense within the United States This Limited Warranty does not cover defects that we determine are the result of accident, alteration, modification, negligence, misuse, abuse, failure to follow instructions, normal wear and tear, or normal maintenance.



Twitter@ripxx



Find Us On
Facebook



ripxx.wordpress.com

www.getreallove.org

Proud supplier of sports
analysis services to Team USA



MTF